



AGENDA

METROPOLITAN BOARD OF PUBLIC EDUCATION

2601 Bransford Avenue, Nashville, TN 37204

Regular Meeting – May 12, 2020 – 5:00 p.m.

Anna Shepherd, Chair

I. CONVENE and ACTION

- A. Call to Order
- B. Establish Quorum

II. AWARDS AND RECOGNITIONS

- A. Academies of Nashville Students of the Year

III. GOVERNANCE ISSUES- OUR ORGANIZATION

- A. Actions
 - 1. Consent
 - a. Approval of Minutes – 03/13/20 – Regular Meeting
 - b. Recommended Approval of Request #2 for Purchase of Network Equipment & Projectors (Hillsboro High School Additions and Renovations) – CDW-G
 - c. Awarding of Purchases and Contracts
 - 1. Card Integrators Corp.
 - 2. Equipment Finders, Inc.
 - 3. Howell & Fisher, PLLC
 - 4. Kits for Kidz
 - 5. Klein Solomon, PLLC
 - 6. Spot Coolers
 - 7. United Rentals (North America), Inc.

IV. DIRECTOR'S REPORT

- A. Metro Schools ReimaginED Phase 1

V. ANNOUNCEMENTS

VI. ADJOURNMENT

MNPS



THE
academies
OF NASHVILLE

MY FUTURE. MY
COLLEGE AND

The Academies of
Nashville
2019-2020 Students
of the Year
Presentation

MNPS Board of Education
May 12, 2020



Peyton Fry
Hillsboro High School



Mohamed Hassan
Antioch High School



Heidi Cortez-Cuevas
John Overton High School



Caitlyn Hayes
Cane Ridge High School



Joseph Nguyen
Hillwood High School



Denzel Harris
Glenclyff High School



Khaliyah Davis
Maplewood High School



Pooja Patel
McGavock High School



Delvin Porter
Whites Creek High School



Kalub Levinson
Hunters Lane High School



Micah Gleaves
Pearl Cohn High School



Jaya Eskridge
Stratford High School



Deloitte.

DOLLAR GENERAL®



Special thanks to our
sponsoring businesses &
founding partners



METROPOLITAN NASHVILLE PUBLIC SCHOOL BOARD MEETING –

March 13, 2020

Members Present: Anna Shepherd, chair, Freda Player-Peters, Fran Bush, Gini Pupo-Walker, Rachael Anne Elrod, Christiane Buggs, Amy Frogge vice-chair, Sharon Gentry

Members Absent: Jill Speering

Meeting called to order: 5:00 p.m.

CONVENE AND ACTION

- A. Call to Order
Ms. Shepherd called the meeting to order.

GOVERNANCE ISSUES

- A. 1. Amendment of Director of School Search Procedure

Motion to Amendment of Director of School Search Procedure to select a Director of School immediately By Sharon Gentry, seconded Gini Pupo-Walker Motion Passes
Vote: 8-0

Ms. Elrod made comments concerning ending the search process without completing a thorough search process and stated that she believed Dr. Battle was doing a great job. Ms. Pupo-Walker expressed her support of Dr. Battle and ending the search process due the extenuating circumstances with the district (tornado and COVID-19). Ms. Frogge made comments concerning the integrity and cost of the search process. She also stated her support of hiring Dr. Battle. Ms. Player-Peters stated that she believed hiring Dr. Battle would provide stability to the community and district. Ms. Buggs thanked Dr. Battle for

her leadership. Ms. Bush thanked Dr. Battle for her hard work for MNPS, she also supported the hiring of Dr. Battle.

2. Appointment of Director of Schools

Motion to appointment Dr. Battle as the permanent Director of Schools.

By Christiane Buggs, seconded Sharon Gentry

Motion Passes

VOTE 8-0

Ms. Shepherd adjourned the meeting at 11:24 a.m.



Chris M. Henson
Board Secretary

Anna Shepherd
Board Chair

Date

GOVERNANCE ISSUES

A. ACTIONS

1. CONSENT

b. RECOMMENDED APPROVAL OF REQUEST #2 FOR PURCHASE OF NETWORK EQUIPMENT & PROJECTORS (HILLSBORO HIGH SCHOOL ADDITIONS AND RENOVATIONS) – CDW-G

We are requesting approval to issue a purchase order for the Phase 2 Network Equipment & Projectors at Hillsboro High School in the amount of \$36,412.27. This equipment is for the first and second floor classrooms in Area I.

It is recommended that this request be approved.

Legality approved by Metro Department of Law.

FUNDING: 45018.80401118

DATE: May 12, 2020

GOVERNANCE ISSUES

A. ACTIONS

1. CONSENT

c. AWARDING OF PURCHASES AND CONTRACTS

(1) VENDOR: Card Integrators Corp.

SERVICE/GOODS (SOW): Indefinite Delivery/Indefinite Quantity (IDIQ) contract for the provision of ID Badges.

SOURCING METHOD: ITB 54088

TERM: May 13, 2020 through May 12, 2025

FOR WHOM: MNPS faculty and staff

COMPENSATION: Contractor shall be paid in accordance with Exhibit A.

Total compensation under this contract is not to exceed \$150,000.

OVERSIGHT: Technology & Information Services

EVALUATION: Quality and timeliness of goods and services provided.

MBPE CONTRACT NUMBER: 7497245

SOURCE OF FUNDS: Operating Budget

GOVERNANCE ISSUES

A. ACTIONS

1. CONSENT

c. AWARDING OF PURCHASES AND CONTRACTS

(2) VENDOR: Equipment Finders, Inc.

SERVICE/GOODS (SOW): One of three Indefinite Delivery/Indefinite Quantity (IDIQ) contracts for the provision of qualified contractors to provide quotes on rental equipment on an as-needed basis.

SOURCING METHOD: RFP 46057

TERM: May 13, 2020 through May 12, 2025

FOR WHOM: All MNPS properties

COMPENSATION: Contractor shall be paid on a project-by-project quote in accordance with the terms and conditions of the request and contract.

Total compensation under this contract is not to exceed \$1,250,000.

OVERSIGHT: Maintenance

EVALUATION: Quality and timeliness of goods and services provided.

MBPE CONTRACT NUMBER: 7497195

SOURCE OF FUNDS: Operating Budget

GOVERNANCE ISSUES

A. ACTIONS

1. CONSENT

c. AWARDING OF PURCHASES AND CONTRACTS

(3) VENDOR: Howell & Fisher, PLLC

SERVICE/GOODS (SOW): Provision of an Impartial Hearing Officer on an as-needed basis.

SOURCING METHOD: RFP 54070

TERM: May 13, 2020 through May 12, 2025

FOR WHOM: Human Resources

COMPENSATION: Contractor shall be paid on a project-by-project quote in accordance with the terms and conditions of the request and contract.

Total compensation under this contract is not to exceed \$125,000.

OVERSIGHT: Human Resources

EVALUATION: Quality and timeliness of services provided.

MBPE CONTRACT NUMBER: 7497263

SOURCE OF FUNDS: Operating Budget

GOVERNANCE ISSUES

A. ACTIONS

1. CONSENT

c. AWARDING OF PURCHASES AND CONTRACTS

(4) VENDOR: Kits for Kidz

SERVICE/GOODS (SOW): Backpacks for MNPS students in need.

SOURCING METHOD: ITB# 49055

TERM: June 30, 2020 through June 29, 2025

FOR WHOM: Students in need of a backpack

COMPENSATION: In accordance with Exhibit A – Cost Spreadsheet.

Total compensation under this contract is not to exceed \$150,000.

OVERSIGHT: Homeless Education

EVALUATION: Quality and timeliness of goods and services provided.

MBPE CONTRACT NUMBER: 7497181

SOURCE OF FUNDS: Federal - Title 1

GOVERNANCE ISSUES

A. ACTIONS

1. CONSENT

c. AWARDING OF PURCHASES AND CONTRACTS

(5) VENDOR: Klein Solomon PLLC

SERVICE/GOODS (SOW): Provision of intermittent legal assistance on an as-needed basis.

SOURCING METHOD: RFP 54069

TERM: May 13, 2020 through May 12, 2025

FOR WHOM: Human Resources

COMPENSATION: Contractor shall be paid on a project-by-project quote in accordance with the terms and conditions of the request and contract.

Total compensation under this contract is not to exceed \$75,000.

OVERSIGHT: Human Resources

EVALUATION: Quality and timeliness of services provided.

MBPE CONTRACT NUMBER: 7497264

SOURCE OF FUNDS: Operating Budget

GOVERNANCE ISSUES

A. ACTIONS

1. CONSENT

c. AWARDING OF PURCHASES AND CONTRACTS

(6) VENDOR: Spot Coolers

SERVICE/GOODS (SOW): One of three Indefinite Delivery/Indefinite Quantity (IDIQ) contracts for the provision of qualified contractors to provide quotes on rental equipment on an as-needed basis.

SOURCING METHOD: RFP 46057

TERM: May 13, 2020 through May 12, 2025

FOR WHOM: All MNPS properties

COMPENSATION: Contractor shall be paid on a project-by-project quote in accordance with the terms and conditions of the request and contract.

Total compensation under this contract is not to exceed \$1,250,000.

OVERSIGHT: Maintenance

EVALUATION: Quality and timeliness of goods and services provided.

MBPE CONTRACT NUMBER: 7497194

SOURCE OF FUNDS: Operating Budget

GOVERNANCE ISSUES

A. ACTIONS

1. CONSENT

c. AWARDING OF PURCHASES AND CONTRACTS

(7) VENDOR: United Rentals (North America), Inc.

SERVICE/GOODS (SOW): One of three Indefinite Delivery/Indefinite Quantity (IDIQ) contracts for the provision of qualified contractors to provide quotes on rental equipment on an as-needed basis.

SOURCING METHOD: RFP 46057

TERM: May 13, 2020 through May 12, 2025

FOR WHOM: All MNPS properties

COMPENSATION: Contractor shall be paid on a project-by-project quote in accordance with the terms and conditions of the request and contract.

Total compensation under this contract is not to exceed \$1,250,000.

OVERSIGHT: Maintenance

EVALUATION: Quality and timeliness of goods and services provided.

MBPE CONTRACT NUMBER: 7497193

SOURCE OF FUNDS: Operating Budget



METRO
NASHVILLE
PUBLIC
SCHOOLS

Metro Schools ReimaginED

May 12, 2020

Agenda

- Metro Schools ReimaginED Updates
- Learning Environments – Consolidation Scenarios
 - Buena Vista ES & Jones Paideia
 - Robert E Lillard ES & Cumberland/Alex Green ES
 - Joelton MS & Haynes MS
 - The Cohn Learning Center
- Timeline



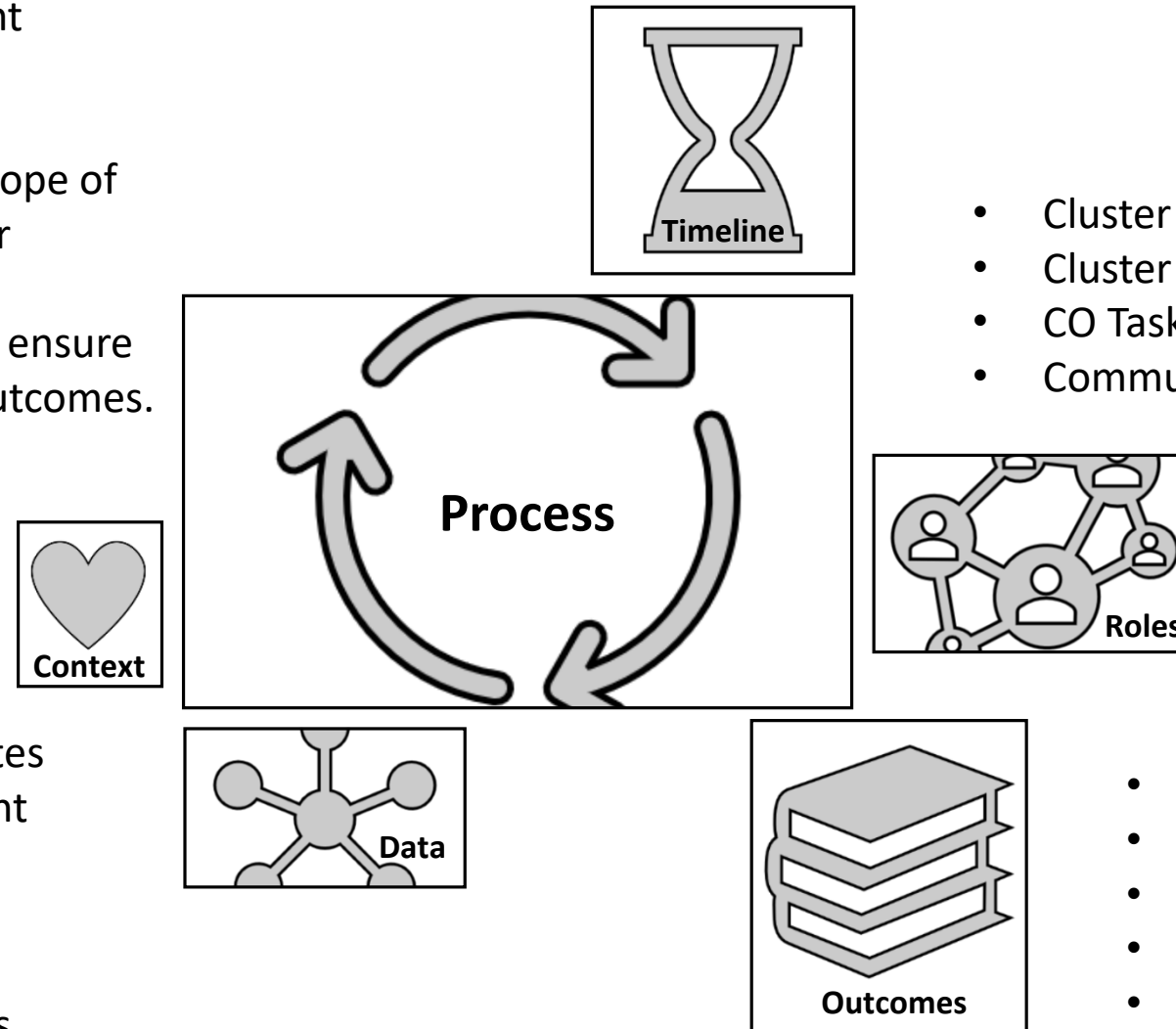
Metro Schools ReimaginED

Vision

- To reimagine the ways in which MNPS provides equitable educational opportunities for ALL students in identified clusters through a synthesis of in-depth academic data dives, community input and feedback, and research about how to best support underserved students and communities



- Brainstorm innovative strategies on addressing persistent challenges that impede student learning and adversely affect teacher performance.
- Develop cluster plans that address the scope of change needed to create a unified cluster experience for all students in all tiers.
- Progress monitor all change initiatives to ensure on-track accomplishment of identified outcomes.



- Cluster Leads
- Cluster Principals
- CO Task Force Members
- Community Members

- Student academic success rates
- Teacher retention/recruitment
- Mobility rates
- Decreased enrollment
- Culture and climate
- Limited supports and services

- Improved academic outcomes
- Unified approaches to instruction
- Stronger collaborative tier relationships
- Consistent student/family supports
- Focused community partnerships
- Strengthened principal-central office partnerships



Collective Responsibility = Authentic Collaboration

*Redesign cluster climate
and culture*

Cluster
Principals
Leadership
Team

Cluster
Support Team
(Principals
and CO
Support)

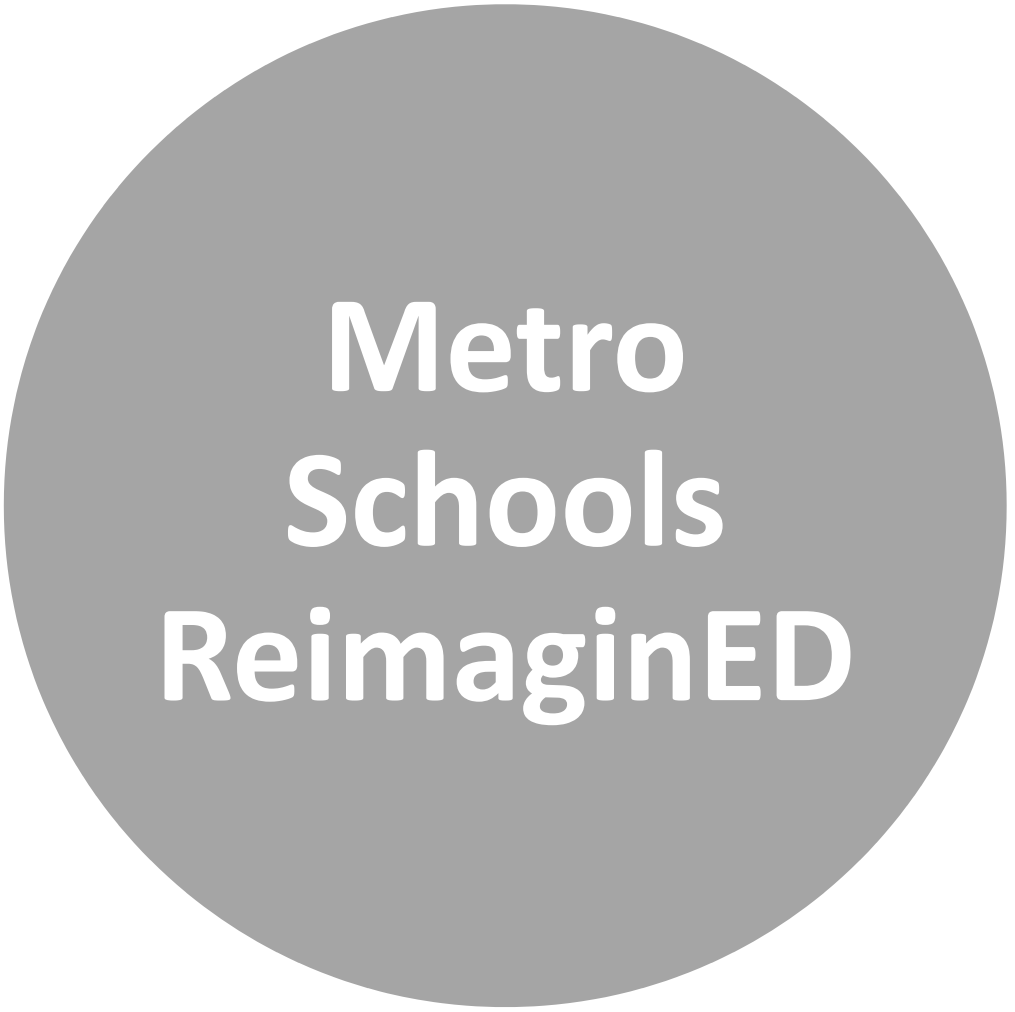
*Innovate and create
new responses to
persistent challenges*

- *Project Charters*
- *Uniform Strategies*

Cluster
Support
Network

*Maximize
community partnerships*





ReimaginED Cluster Plans



We recommend that the Mapewood feeder pattern be established as a unified branded AVID-programmed cluster with an emphasis on advanced academics and STEAM.



We recommend the creation of a unified Music City Arts and Health Sciences Cluster with an emphasis on advanced academics.



We recommend the establishment of the Whites Creek Early College/STEAM Academic Cluster where students can earn dual credits and graduate with a high-school diploma and an Associate's degree.

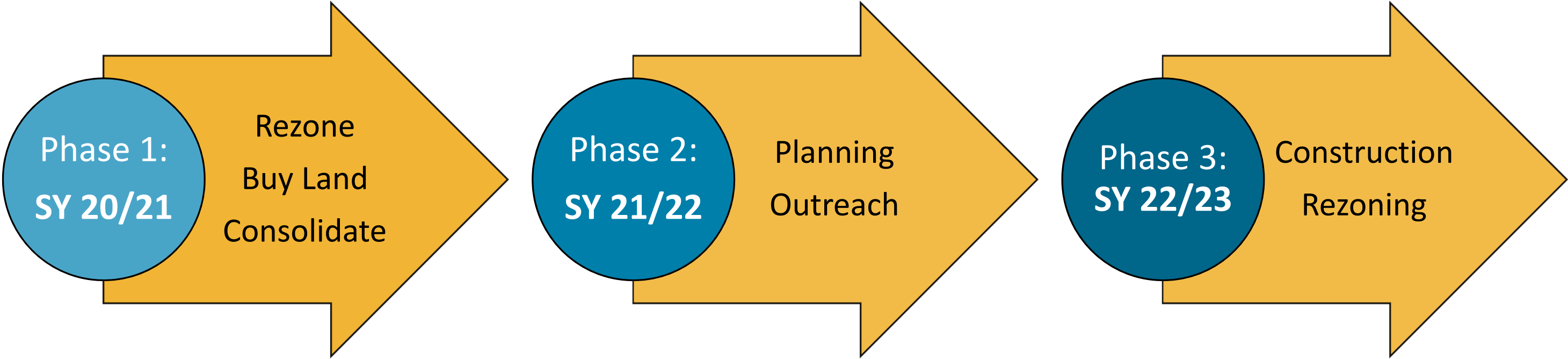




METRO
NASHVILLE
PUBLIC
SCHOOLS

Learning Environments

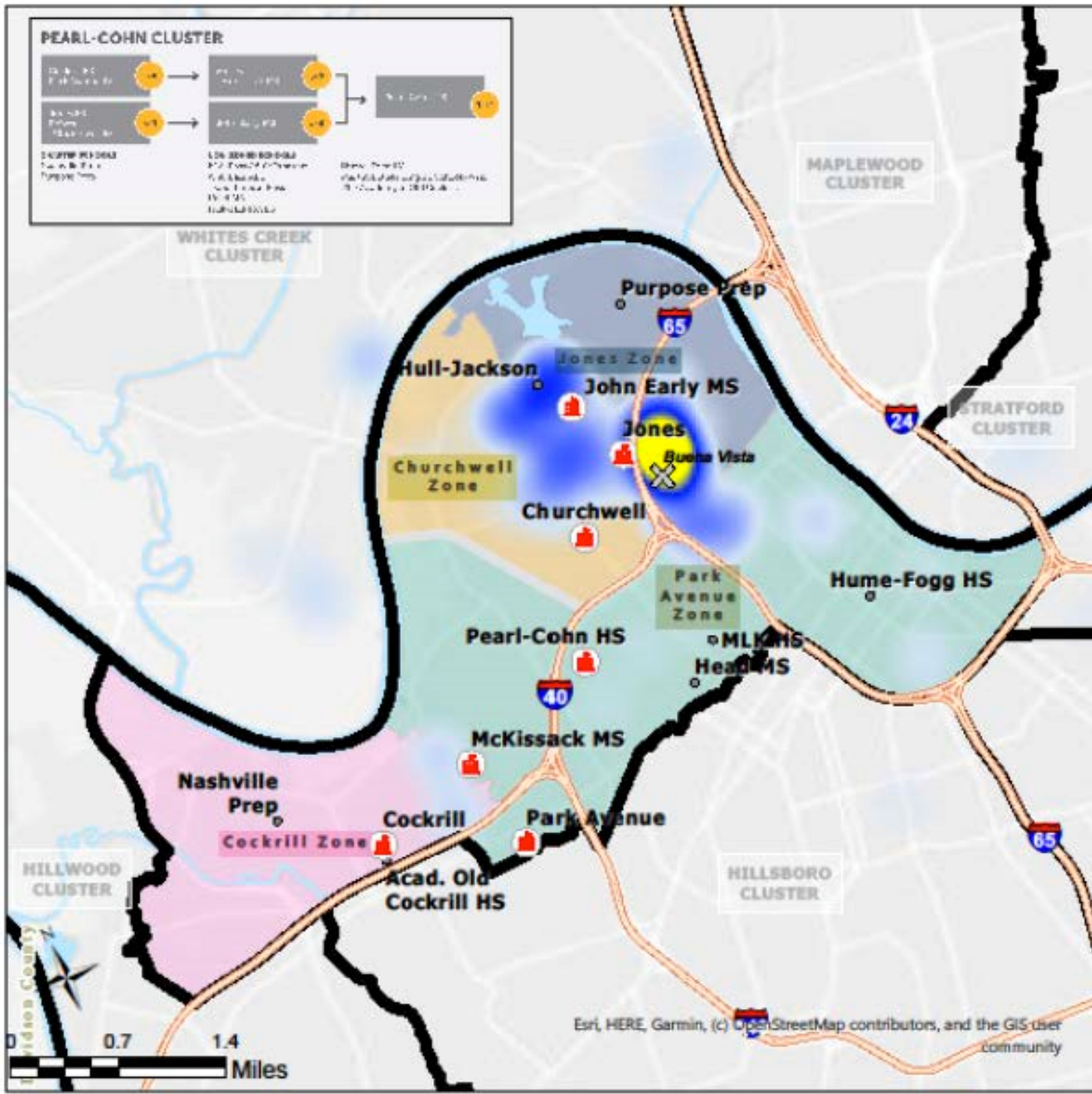
Facility Implementation Phases



Phase I: Current Enrollment and Capacity

School	Oct 19/20	20/21 Proj.	24/25 Proj.	Capacity	Current Utilization	20/21 Proj Utilization
Buena Vista ES	201	182	191	458	43.89%	39.74%
Jones Paideia ES	205	179	250	394	52.03%	45.43%
Robert E Lillard ES	224	213	250	529	42.34%	40.26%
Alex Green ES	241	244	237	349	69.05%	69.91%
Cumberland ES	268	270	276	496	54.03%	54.44%
Joelton MS	293	267	294	483	60.66%	55.28%
Haynes MS	217	210	250	517	41.97%	40.62%
The Cohn Learning Center	60	60		N/A	N/A	0%



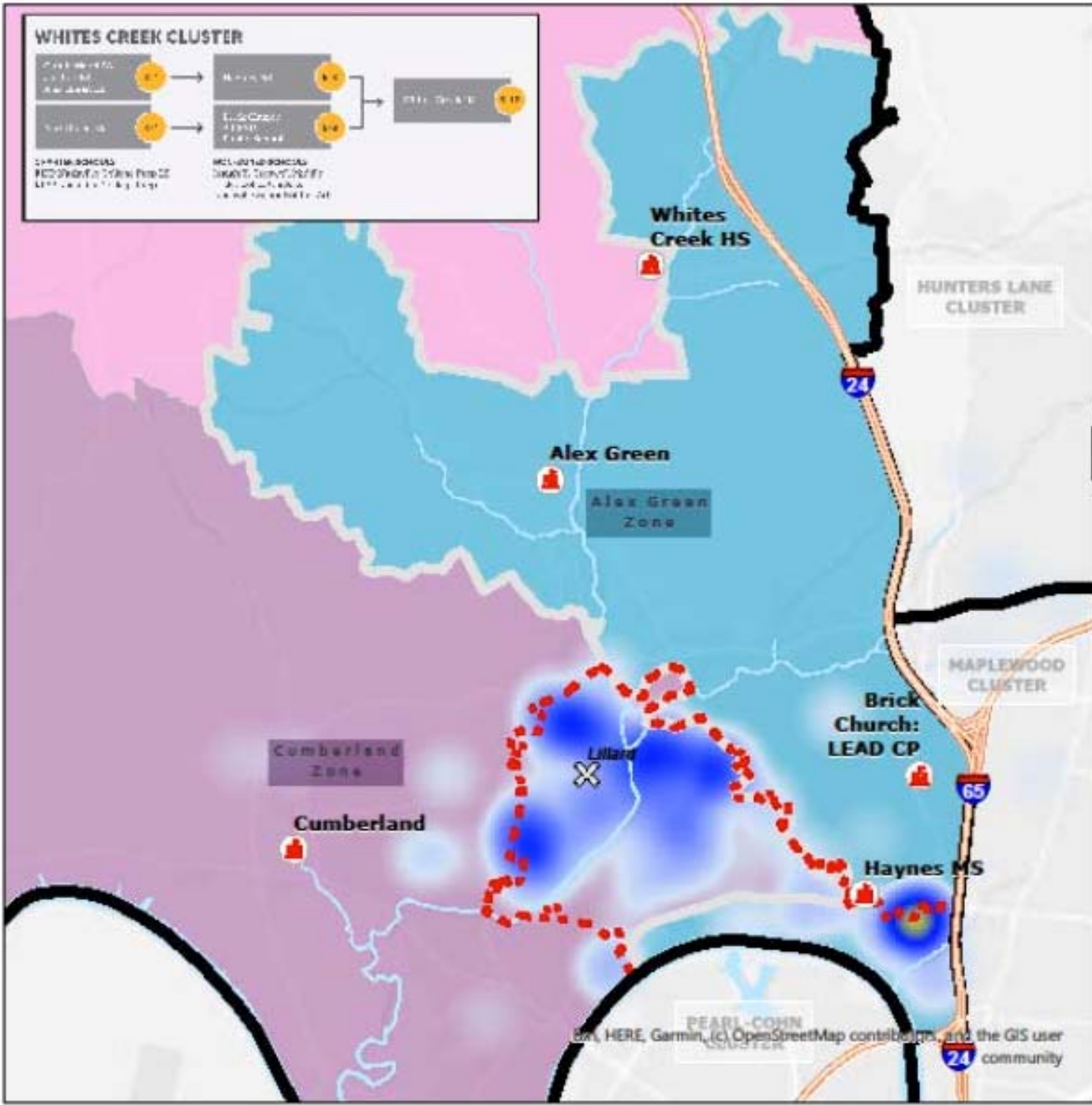


Phase I: Consolidate Jones & Buena Vista

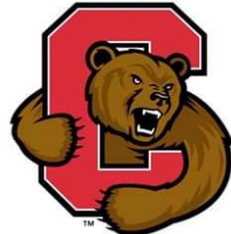


- Impact:
- Accountability Measures will be combined
 - SBB savings allow for reallocation of resources
 - Consolidated school will not become a School of Innovation
 - A reuse for the Buena Vista facility shall be identified





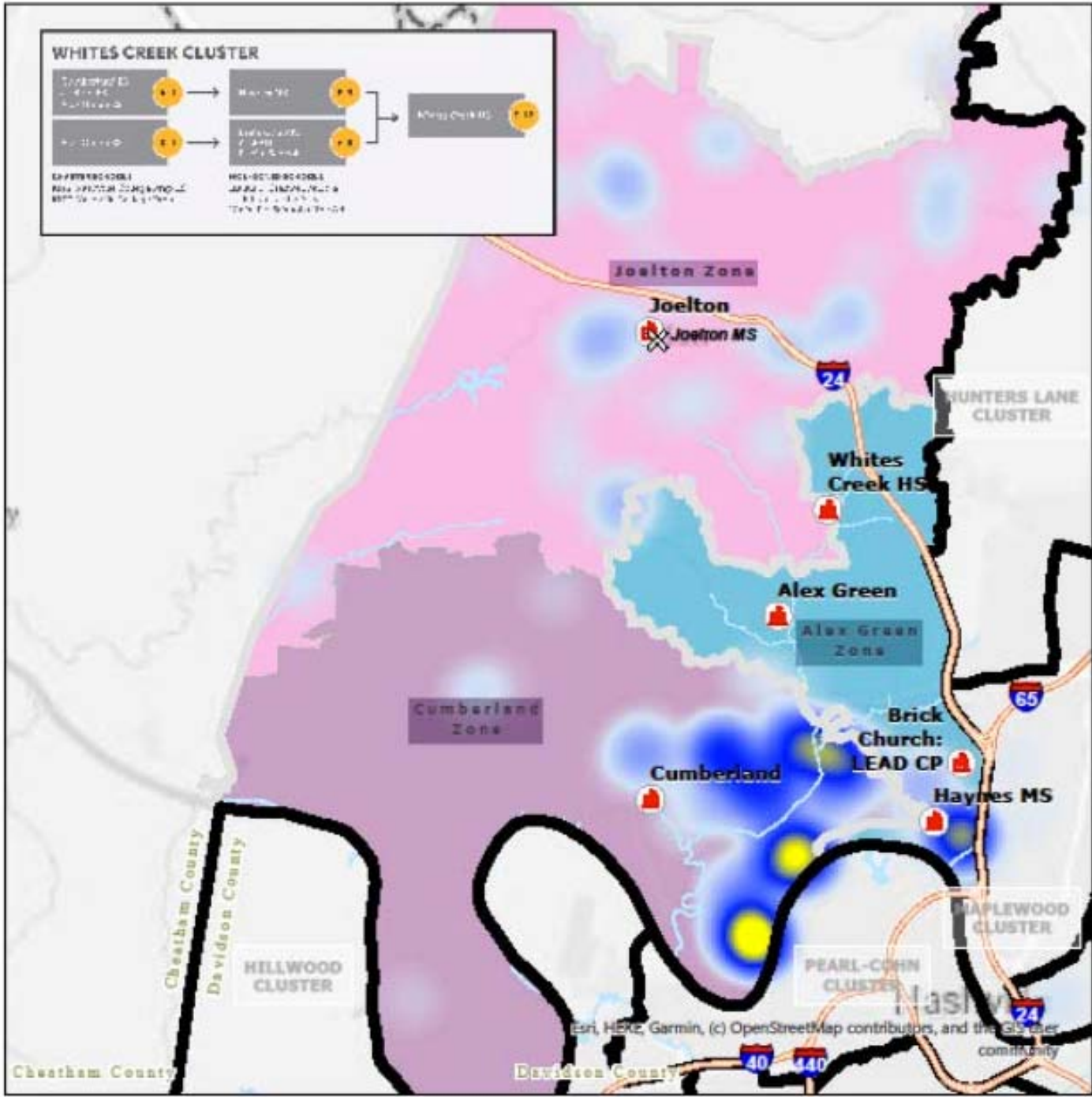
Phase I: Consolidate Lillard into Alex Green & Cumberland



Impact:

- Accountability Measures will be combined
- SBB savings allow for reallocation of resources
- Alex Green and Cumberland will remain Schools of Innovation
- A reuse for the Robert E Lillard facility shall be identified
- The district will find a way to continue to honor Judge Lillard’s legacy





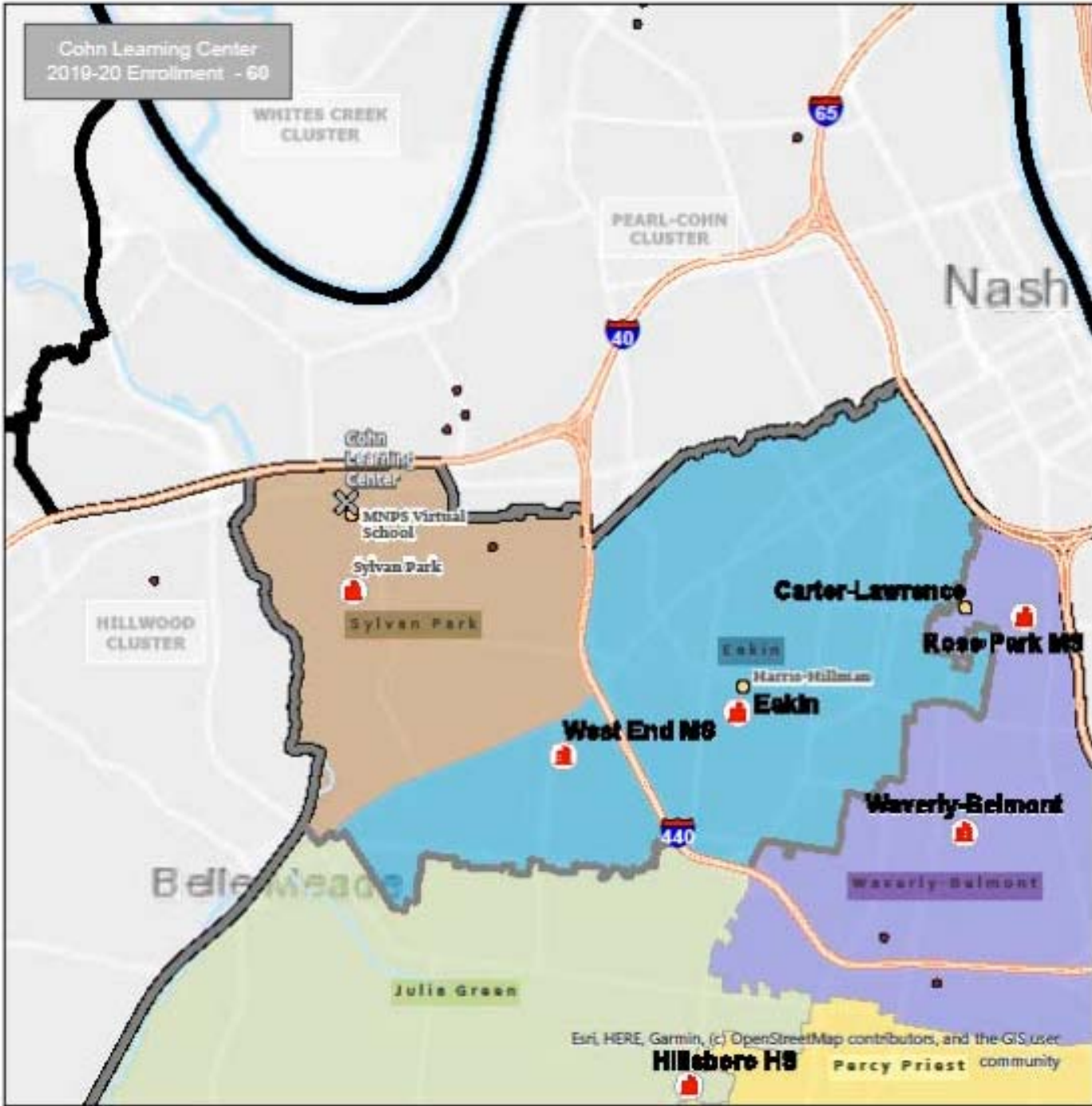
Phase I: Consolidate Joelton & Haynes



Impact:

- Accountability Measures will be combined
- SBB savings allow for reallocation of resources
- Consolidated school will remain a School of Innovation
- A reuse for the Joelton facility shall be identified





Phase I: Consolidate The Cohn Learning Center

Cohn Learning Center



Zoned High Schools

Impact:

- Provides students with support services at zoned and specialty high schools
- SBB savings allow for reallocation of resources
- Decreases the number of Schools of Innovation
- A reuse for the Cohn Learning facility shall be identified



Phase I: Summary

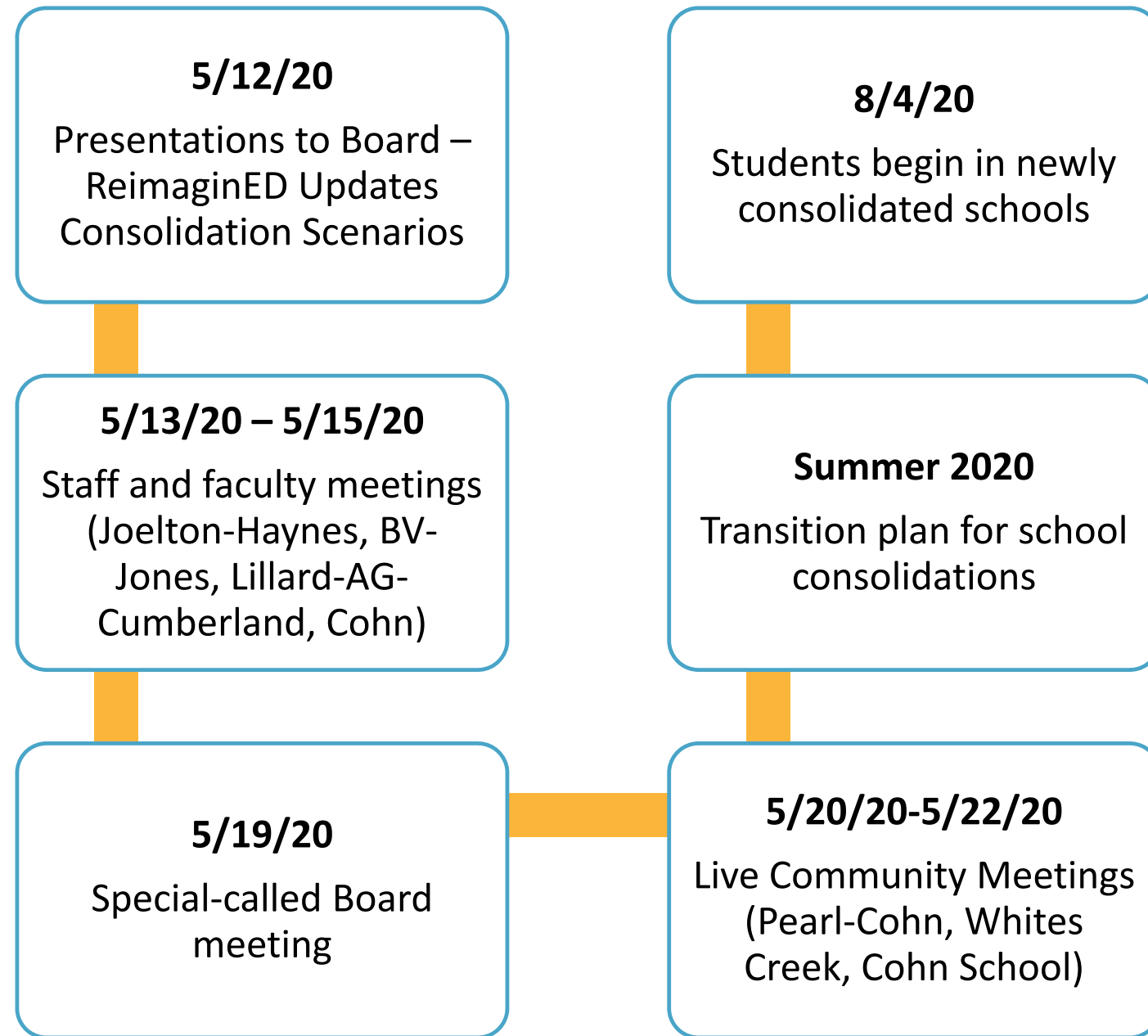
School	Oct 19/20	20/21 Proj.	24/25 Proj.	Capacity	Current Utilization	20/21 Proj Utilization
Buena Vista ES	201	0	0	458	43.89%	0%
Jones Paideia ES	205	361	370	394	52.03%	91.62%
Robert E Lillard ES	224	0	0	529	42.34%	0%
Alex Green ES	241	292	291	349	69.05%	83.67%
Cumberland ES	268	413	453	496	54.03%	83.27%
Joelton MS	293	0	0	483	60.66%	0%
Haynes MS	217	477	517	517	41.97%	92.26%
The Cohn Learning Center	60	0	0	N/A	N/A	0%

Estimated Savings:

- Student Based Budgeting - \$3,313,000
- Other Savings (Custodial, Utilities, etc.) - \$181,500
- Total Estimated Savings - \$3,494,500



Phase I: Timeline





School Consolidation Study

Executive Summary

Board Meeting
May 12, 2020

School Year 20/21

Antioch Cluster

- Rezone a portion of Thomas Edison Elementary into Smith Springs Elementary.

Cane Ridge Cluster

- Retain 5th grade at Cole Elementary. Antioch Middle will not have 5th grade.
- Purchase land for construction of a new Middle School.

Maplewood Cluster

- Close Gra-Mar Middle. Rezone Gra-Mar Middle into Jere Baxter Middle.

Pearl-Cohn Cluster

- Close Buena Vista Elementary. Make Jones the zoned school.

Whites Creek Cluster

- Close Robert E. Lillard Elementary. Rezone students into Alex Green and Cumberland Elementaries.
- Close Joelton Middle. Convert Haynes into the zoned middle for Cumberland and Joelton Elementaries. Haynes to remain on open enrollment list.

Choice Schools

- Strengthen the pathway from Warner to Isaiah T Creswell to Nashville School of the Arts.
- Close The Cohn Learning Center program. Students return to their zoned high school.



School Consolidation Study:

Pearl-Cohn Cluster

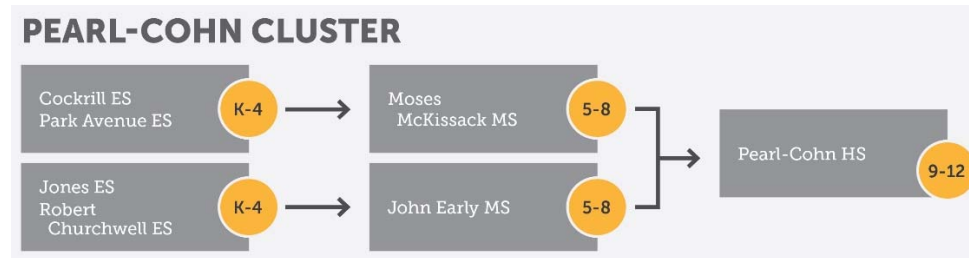
Board Meeting
May 12, 2020

Consolidation Scenario: Close Buena Vista. Jones becomes zoned school

Assumption: This scenario assumes that MNPS would close the Buena Vista Elementary program. Jones Paideia would be converted into the zoned school. The students currently attending Buena Vista would be rezoned to Jones Paideia Elementary. Jones would continue to be included in the open enrollment choice options. This scenario assumes 100% of the students would attend the consolidated school program.

Program Opportunities: Students who attend Pearl-Cohn High School can take advantage of a health pathways program or participate in a program that is designed for students interested in entertainment. Pearl-Cohn High has a state-of-the-art recording studio and houses the nation’s first student-run recording label. Pearl-Cohn High School partners with Capitol Records to host “Bonus Tracks,” a hands-on learning experience that focuses on the business side of the music industry. Students work with industry insiders who share their experiences and offer students tips on professionalism and career success. Along with Pearl-Cohn High, Community Achieves supports Robert Churchwell and Moses McKissack Middle Schools. Under the Metro Schools ReimaginED initiative, Pearl-Cohn will become a unified Music City Arts and Health Sciences cluster with established advanced academic pathways in grades K-12. Local businesses, colleges and universities will partner with all schools in the Pearl-Cohn cluster to provide experiential learning opportunities for students.

Effect on Feeder Pattern & Rezoning: Students attending Buena Vista would be rezoned into Jones Paideia. The Harpeth Valley zoned option would remain unchanged.



Enrollment and Utilization Assumptions:

School	Oct 19/20	20/21 Projection	24/25 Projection	29/30 Projection	Capacity	Current Utilization	20/21 Projected Utilization	24/25 Projected Utilization
Jones Paideia PK-4	205	361	370	371	394	39.4%	91.6%	93.9%

Estimated Impact on Demographics:

School	Race/Ethnic (meet at least 1)	I / L / D (meet at least 2)
Jones Paideia	X	✓

Consolidation Scenario: Close Buena Vista. Jones becomes zoned school

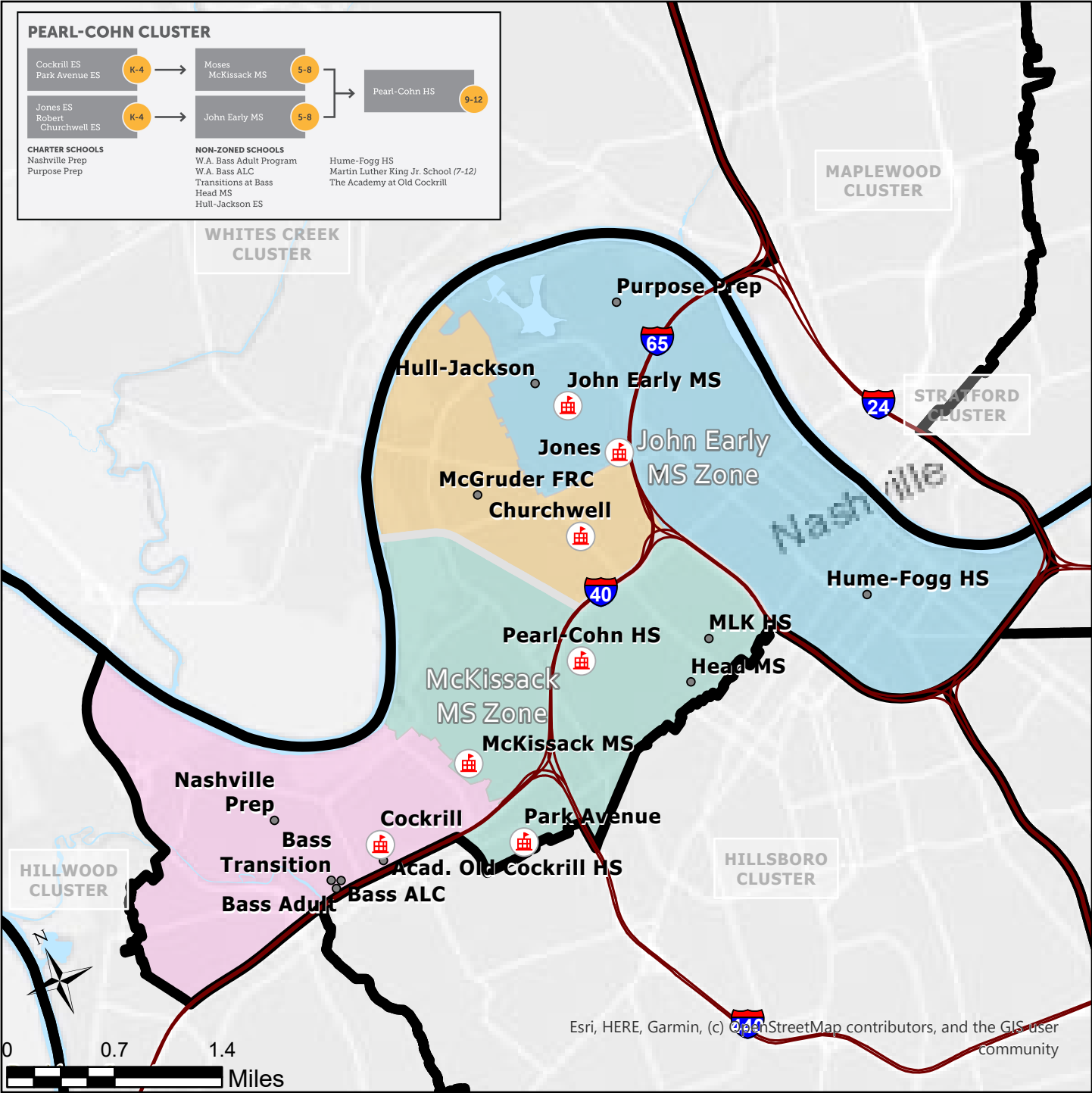
Suggested Building Reuse: A reuse should be identified for the Buena Vista building prior to making a decision to close the facility. The building could be considered for a location for a school for Students with Interrupted Formal Education (SIFE), a second chance high school, or an employee child care facility. Nutrition services could also be relocated to the building and make use of the existing school kitchen as a test kitchen. The buildings could support the office and training/classroom space needs of the transportation department. The security office training activities currently at Old Murrell School could be relocated to the building. Other suggested reuses could include office space for central office and/or cluster support staff.

Capital Construction Budget Implications: Buena Vista received an addition and facility renovation in 2003. It is currently in year 7-10 for a \$20.62M renovation.

Transportation Implications: No additional school busses would be required.

Cost Summary:

- Summary of Potential Cost Savings
 - \$810,000 per year in school based budget.
 - \$112,000 per year in utility costs at Buena Vista.
 - \$93,622 per year in janitorial services at Buena Vista.
 - \$185 per year in grounds upkeep at Buena Vista.
 - Total utility, grounds, and janitorial savings only achieved by relinquishing the property. Partial saving possible through change in use.
- Summary of Potential Cost
 - \$45,000 estimated one time moving expenses.
 - \$177,600 to repaint Jones Paideia.
 - \$12,000 for updated signage if the school name was changed.
 - \$2,500 for rebranding and website update if the school name was changed.



Pearl-Cohn Cluster

Print Date: 4/23/2020



Proposed 2020-21 SY

- Zone Schools
- Other Schools
- Cluster Boundary
- Middle School Boundary
- Lake/River
- Elementary Zone**
- Jones
- Churchwell
- Cockrill
- Park Avenue

The geographic data layers and information were produced by MNPS Student Assignment Services are provided as a public resource. Metro Schools makes no warranties, expressed or implied concerning the accuracy, completeness or suitability of this data, and it should not be construed or used as a legal description. Every reasonable effort is made to ensure the accuracy and completeness of the data.



School Consolidation Study:

Pearl-Cohn Cluster

Board Meeting
May 12, 2020

Current Information for Buena Vista Elementary School

Program: Buena Vista does not offer any unique programming and is an enhanced option school. Seven (7) students participate in the Encore program and 27 students participate in the Young Scholars of Nashville Program (YSN) to nurture the talents of students who have not yet qualified for gifted and talented services but are still in need of challenging learning experiences. The Advanced Academics Resource Teacher (AART) collaborates with the general education teachers to extend learning opportunities for students in Tier I and enrichment.

Priority KPIs: Achievement, Attendance, Suspensions

School	2019 TNReady Achievement Results					2019 Tennessee Value Added Assessment Results				
	% of Students On Track or Mastered			EL/A & Math Proficiency Rate	2-year EL/A & Math Proficiency Rate Average	School-Wide Growth Composites				
	English/LA	Math	Soc St			Composite	EOC	Numeracy	Literacy	Soc St
Buena Vista ES	9.4%	12.9%		8.4%	9.6%	3		3	4	
MNPS	25.9%	29.9%	27.7%	27.9%	26.9%	3	1	5	5	1

School	2019-20 MAP Reading Results							
	Median National Percentile (NP)		% of Students Above Average (Quintiles 4-5)			Academic Growth from Aug 2019 to Feb 2020		
	Aug 2019 Baseline	Feb 2020	Aug 2019 Baseline	Feb 2020 Target	Feb 2020 Results	Increase in % Q4-Q5	Growth Median NP	% Met Growth Target
Buena Vista ES	23	22	14.4%	19.4%	10.5%	-3.9%	30	37.6%
MNPS	40	41	32.5%	36.7%	32.7%	0.1%	50	52.1%

School	2019-20 MAP Mathematics Results							
	Median National Percentile (NP)		% of Students Above Average (Quintiles 4-5)			Academic Growth from Aug 2019 to Feb 2020		
	Aug 2019 Baseline	Feb 2020	Aug 2019 Baseline	Feb 2020 Target	Feb 2020 Results	Increase in % Q4-Q5	Growth Median NP	% Met Growth Target
Buena Vista ES	26	18	18.6%	23.6%	7.9%	-10.7%	18	18.8%
MNPS	34	35	26.0%	30.6%	26.7%	0.7%	53	55.5%

School	2019-20% of Students with Satisfactory (95% or Above) Average Daily Attendance			
	2018-19 Baseline	2019-20 Target	2019-20 Result*	2018-19 Increase
Buena Vista ES	27.2%	29.4%	30.1%	2.9%
MNPS	56.2%	57.5%	60.4%	2.9%

* Through March 11, 2020

School	2019-20 % of Students with Out-of-School Suspension			
	2018-19 Baseline	2019-20 Target	2019-20 Result*	2019-20 Reduction
Buena Vista ES	3.9%	1.0%	8.5%	4.6%
MNPS	9.26%	6.6%	7.2%	-2.11%

* Through March 11, 2020

Current Information for Buena Vista Elementary School

Building Data:

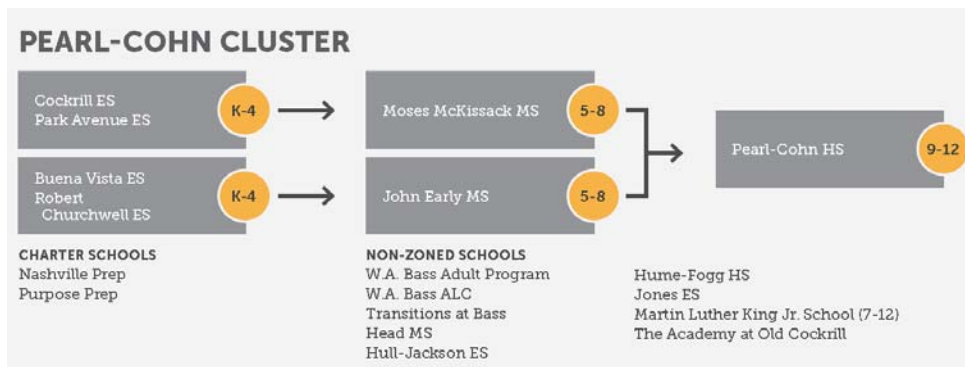
School	Building Area	Campus Size	Condition	Suitability	Technology	Site	Facility Condition Index
Buena Vista	65,470	2.63	85.4	76.0	85.7	83.3	83.34

Construction History: Buena Vista Elementary opened in 1931. The school received a full renovation and addition costing \$4.26M. The project was completed in 2003.

Enrollment and Utilization Data:

School	Oct 16/17	Oct 17/18	Oct 18/19	Oct 19/20	20/21 Projection	24/25 Projection	29/30 Projection	Capacity	Current Utilization	24/25 Utilization
Buena Vista	290	286	243	201	182	191	192	458	39.7%	41.7%

Feeder Pattern:



Demographic Data:

School	Asian		Black or African American		Hispanic or Latino		White		American Indian or Alaska Nat		Other		Income (ED/FRL)		Language (ELL)		Disability (SWD)		Total Students	Race/Ethnic (meet at least 1)	I / L / D (meet at least 2)
	Count	%	Count	%	Count	%	Count	%	Count	%	Count	%	Count	%	Count	%					
Buena Vista	0	0%	194	96%	2	1%	8	2%	0	0%	0	0%	174	86%	2	1%	22	11%	202	X	✓

School Based Budget (yearly figures):

School	FTEs	Total Allocation	Supplemental Funding	Per Pupil Allocation	MNPS Average Per Pupil Allocation
Buena Vista	20.5	\$1,740,002	\$587,376	\$11,502	\$7,046

* Supplemental Funding is provide to small schools to ensure they can offer the full education experience and meet state and district staffing requirements. If a school does not earn enough funding through the School Base Budget Model to meet these requirements, supplemental funding is added to bring them up to this baseline level.



School Consolidation Study:

Pearl-Cohn Cluster

Board Meeting
May 12, 2020

Current Information for Jones Paideia Elementary School

Program: Jones Paideia Elementary Magnet School practices the Paideia philosophy, fostering critical and creative thinking through Socratic seminar, intellectual coaching and mastery of information. Spanish instruction is also offered to students in grades K-4. Jones does not house a Pre-K program.

Priority KPIs: Achievement, Attendance, Suspensions

School	2019 TNReady Achievement Results					2019 Tennessee Value Added Assessment Results				
	% of Students On Track or Mastered			Proficiency Rate	2-year Proficiency Rate Average	School-Wide Growth Composites				
	English/LA	Math	Soc St			Composite	EOC	Numeracy	Literacy	Soc St
Jones Paideia ES	16.3%	7.6%		22.5%	11.7%	1		1	1	
MNPS	25.9%	29.9%	27.7%	27.9%	26.9%	3	1	5	5	1

School	2019-20 MAP Reading Results							
	Median National Percentile (NP)		% of Students Above Average (Quintiles 4-5)			Academic Growth from Aug 2018 to Feb 2019		
	Aug 2018 Baseline	Feb 2019	Aug 2018 Baseline	Feb 2019 Target	Feb 2019 Results	Increase in % Q4-Q5	Growth Median NP	% Met Growth Target
Jones Paideia ES	39	31	28.9%	33.3%	26.3%	-2.6%	43	47.1%
MNPS	40	43	32.6%	36.8%	34.2%	1.6%	57	57.7%

School	2019-20 MAP Mathematics Results							
	Median National Percentile (NP)		% of Students Above Average (Quintiles 4-5)			Academic Growth from Aug 2018 to Feb 2019		
	Aug 2018 Baseline	Feb 2019	Aug 2018 Baseline	Feb 2019 Target	Feb 2019 Results	Increase in % Q4-Q5	Growth Median NP	% Met Growth Target
Jones Paideia ES	34	25	19.0%	24.0%	10.5%	-8.5%	26	32.3%
MNPS	33	35	25.2%	29.9%	26.1%	0.9%	55	57.1%

School	2019-20% of Students with Satisfactory (95% or Above) Average Daily Attendance			
	2018-19 Baseline	2019-20 Target	2019-20 Result*	2018-19 Increase
Jones Paideia ES	66.8%	67.8%	67.0%	0.2%
MNPS	56.2%	57.5%	60.4%	2.9%

* Through March 11, 2020

School	2019-20 % of Students with Out-of-School Suspension			
	2018-19 Baseline	2019-20 Target	2019-20 Result*	2019-20 Reduction
Jones Paideia ES	1.4%	0.0%	4.4%	3.0%
MNPS	9.26%	6.6%	7.2%	-2.11%

* Through March 11, 2020

Current Information for Jones Paideia Elementary School

Building Data:

School	Building Area	Campus Size	Condition	Suitability	Technology	Site	Facility Condition Index
Jones Paideia	64,560	3.46	85.8	73.2	85.6	75.0	82.15

Construction History: Jones Paideia Elementary opened in 1936. The school received a full renovation and addition costing \$4.32M. The project was completed in 2006.

Enrollment and Utilization Data:

School	Oct 16/17	Oct 17/18	Oct 18/19	Oct 19/20	20/21 Projection	24/25 Projection	29/30 Projection	Capacity	Current Utilization	24/25 Utilization
Jones Paideia	314	289	260	205	179	250	250	394	45.4%	63.5%

Feeder Pattern: Jones Paideia has no zone. Students who attend Jones live in the following zones:

School - Current Enrollment (Current Utilization) – *Number of Students currently attending Haynes*

- Buena Vista ES - 182 (39.7%) – 30
- Cumberland ES - 270 (54.4%) – 23
- Park Avenue ES - 356 (42.0%) – 22
- Robert Churchwell ES - 281 (43.7%) – 18
- Alex Green ES - 244 (69.9%) – 16
- Bellshire ES - 326 (58.2%) – 16
- Robert E Lillard ES – 213 (40.3%) – 11
- Other – 69

Demographic Data:

School	Asian		Black or African American		Hispanic or Latino		White		American Indian or Alaska Nat		Other		Income (ED/FRL)		Language (ELL)		Disability (SWD)		Total Students	Race/Ethnic (meet at least 1)	I / L / D (meet at least 2)
Jones Paideia	0	0%	205	98%	4	2%	0	0%	0	0%	0	0%	100	48%	0	0%	23	11%	209	X	✓

School Based Budget (yearly figures):

School	FTEs	Total Allocation	Supplemental Funding	Per Pupil Allocation	MNPS Average Per Pupil Allocation
Joes Paideia	23.7	\$1,771,230	\$576,954	\$9,902	\$7,046

* Supplemental Funding is provide to small schools to ensure they can offer the full education experience and meet state and district staffing requirements. If a school does not earn enough funding through the School Base Budget Model to meet these requirements, supplemental funding is added to bring them up to this baseline level.



School Consolidation Study:

The Cohn Learning Center

Board Meeting
May 12, 2020

Consolidation Scenario

Assumption: This scenario assumes that MNPS would close the Cohn Learning Center program, and the students currently attending the school would return to their zoned high school.

Program Opportunities: The closure of The Cohn Learning Center will allow MNPS to infuse additional supports at all zoned high schools. The MNPS Counseling Department will assist students with graduation planning by reviewing all student transcripts and contacting families to review zone and academy options. Receiving schools will collaborate with the MNPS Social Emotional Learning Department to ensure the following supports are provided:

- Use a strengths-based approach to help students identify their strengths, aptitudes, and interests
- Use formative assessment strategies to determine where each student is in his/her learning
- Shift the power dynamics by having students identify their individual goals
- Promote a connectedness for students by implementing community gatherings
- Integrate “I Can” Statements to move students forward
- Empower students to take charge of their own educational experience, better preparing them for school and beyond
- Provide implicit biases trainings for all school staff
- Integrate the 5 Core Competencies in Social and Emotional Learning:
 - Self-Awareness
 - Self-Management
 - Social Awareness
 - Relationship Skills
 - Responsible Decision Making

Consolidation Scenario

Effect on Feeder Pattern & Rezoning: The Cohn Learning Center is a choice school. Its closure would have no effect on feeder patterns.

Enrollment and Utilization Assumptions: The students currently attending The Cohn Learning Center would return to their zoned high school. Students who currently attend The Cohn Learning Center reside in each of the 12 high school clusters. Their return to their zoned school would have little impact on the zoned high school utilization.

Estimated Impact on Demographics: There would be no impact on demographics at the receiving zoned high schools.

Suggested Building Reuse: The building currently houses The Cohn Learning Center, the MNPS Virtual School, MNPS Special Education Offices, and MNPS PreK Administrative Offices. The building is also home to various MNPS educational partners, including the Nashville Adult Literacy Counsel, Homework Hotline, and Metro Community Education. Other community-based organizations also occupy the building. The building could be offered to Metro Government in exchange for land in the southern part of the county where a new school location is needed to combat overcrowding. Library Services has expressed interest in the building as an alternate location for the Richland Branch Library. The building could also become office space for MNPS central office staff or other community users.

Capital Construction Budget Implications: The Cohn Learning Center received a facility renovation in 2003. It is currently in year 4 for a \$38.46M renovation.

Transportation Implications: No additional school busses would be required.

Cost Summary:

- Summary of Potential Cost Savings
 - \$1,090,000 per year in school based budget.
 - \$97,000 per year in utility costs at Cohn.
 - \$167,843 per year in janitorial services at Cohn.
 - \$187 per year in grounds upkeep at Cohn.
 - Total utility, grounds, and janitorial savings only achieved by relinquishing the property. Partial saving possible through change in use.
- Summary of Potential Cost
 - \$33,000 estimated one time moving expenses.



School Consolidation Study:

The Cohn Learning Center

Board Meeting
May 12, 2020

Current Information for The Cohn Learning Center

Program: The Cohn Learning Center supports students from other MNPS high schools who are not on track to graduate due to academic, behavioral and social issues. Enrollment is based on needs and typically varies between 55-125 students throughout the school year.

Priority KPIs: Achievement, Attendance, Suspensions

School	2019 TNReady Achievement Results					2019 Tennessee Value Added Assessment Results				
	% of Students On Track or Mastered			EL/A & Math Proficiency Rate	2-year EL/A & Math Proficiency Rate Average	School-Wide Growth Composites				
	English/LA	Math	Soc St			Composite	EOC	Numeracy	Literacy	Soc St
Cohn LC	0.0%	0.0%	0.0%	0.4%	0.0%	1	1	1	1	1
MNPS	25.9%	29.9%	27.7%	27.9%	26.9%	3	1	5	5	1

School	2019-20% of Students with Satisfactory (95% or Above) Average Daily Attendance			
	2018-19 Baseline	2019-20 Target	2019-20 Result*	2018-19 Increase
Cohn LC	-	-	10.3%	-
MNPS	56.2%	57.5%	60.4%	2.9%

* Through March 11, 2020

School	2019-20 % of Students with Out-of-School Suspension			
	2018-19 Baseline	2019-20 Target	2019-20 Result*	2019-20 Reduction
Cohn LC	32.7%	30.7%	25.4%	-7.3%
MNPS	9.26%	6.6%	7.2%	-2.11%

* Through March 11, 2020

Building Data:

School	Building Area	Campus Size	Condition	Suitability	Technology	Site	Facility Condition Index
Cohn LC	135,357 SF	2.38 acres	61.3	59.4	67.5	90.0	67.27

Construction History: The Cohn building was built in 1928 and received a facility renovation in 2003.

Enrollment and Utilization Data:

School	Oct 16/17	Oct 17/18	Oct 18/19	Oct 19/20	20/21 Projection	24/25 Projection	29/30 Projection	Capacity	Current Utilization	24/25 Utilization
Cohn LC	89	73	78	76	89	60	60	-	-	-

Demographic Data:

School	Asian		Black or African American		Hispanic or Latino		White		American Indian or Alaska Nat		Other		Income (ED/FRL)		Language (ELL)		Disability (SWD)		Total Students	Race/Ethnic (meet at least 1)	I / L / D (meet at least 2)
	Count	%	Count	%	Count	%	Count	%	Count	%	Count	%	Count	%	Count	%					
Cohn LC	0	0%	60	80%	8	10%	8	10%	0	0%	0	0%	52	68%	0	0%	17	22%	76	X	✓

School Based Budget (yearly figures):

School	FTEs	Total Allocation	Supplemental Funding	Per Pupil Allocation	MNPS Average Per Pupil Allocation
Cohn LC	26.0	\$1,434,610	\$0	\$18,876	\$7,046



School Consolidation Study:

Whites Creek Cluster

Board Meeting
May 12, 2020

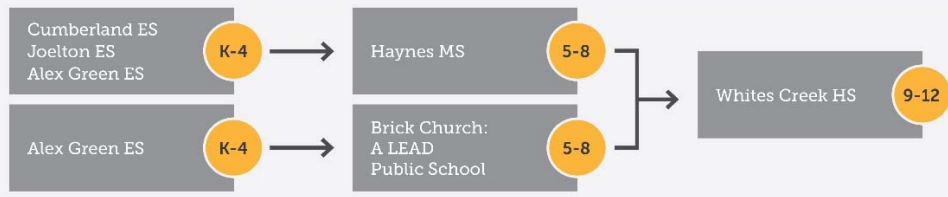
Consolidation Scenario: Whites Creek Cluster

Assumption: This scenario assumes that MNPS would close the Joelton Middle School program, and the students currently attending this school would be consolidated into Haynes Middle School. It also assumes that MNPS would close the Robert E Lillard Elementary School program, and the students currently attending this school would be rezoned into Cumberland Elementary and Alex Green Elementary. This scenario assumes 100% of the students in all zones would attend the consolidated school programs.

Program Opportunities: This reorganization may increase student enrollment and academic opportunity at Haynes. Community health and business partners are already interested in supporting the Haynes Medical Lab and Medical Mondays. Unlike Joelton, Haynes is a Phase I STEAM school, so students will be engaged in the 4 C's (collaboration, critical thinking, communication, and creativity), experiential and project based learning. These experiences can be carried over at Whites Creek High School's academies of Alternative Energy, Sustainability and Logistics, and Community Health. The reorganization may also increase student enrollment and academic opportunity at both Cumberland and Alex Green. Cumberland currently emphasizes STEAM opportunities through school-based family events alongside community partners while Alex Green has begun researching the implementation of STEAM. STEAM interdisciplinary instruction emphasizing exploratory units of study around science-based topics through basic foundational literacy and math instruction will not only enhance student engagement and achievement but create a connected pathway to middle and high school.

Effect on Feeder Pattern & Rezoning: Students formerly attending Lillard would be rezoned into Alex Green and Cumberland. Students attending Cumberland and Joelton would be rezoned into Haynes. Students who attend Alex Green who live in the former Lillard zone would attend Haynes. To prevent long term over-crowding, it is recommended to limit open enrollment in future years.

WHITES CREEK CLUSTER



Enrollment and Utilization Assumptions:

School	Oct 19/20	20/21 Projection	24/25 Projection	29/30 Projection	Capacity	Current Utilization	20/21 Projected Utilization	24/25 Projected Utilization
Alex Green PK-4	241	292	291	292	349	69.1%	83.7%	83.4%
Cumberland K-4	268	413	453	454	496	54.0%	83.3%	91.3%
Haynes 5-8	217	477	517	517	517 ⁽¹⁾	42.0%	92.3%	100%

(1) A plan for a Restorative Practices School yielded a capacity of 494 with 25 students per classroom. If class sizes were reduced to 20, the capacity would be 404. Targets for open enrollment would have to be lowered if the reduced class sizes were used.

Consolidation Scenario: Whites Creek Cluster

Estimated Impact on Demographics:

School	Race/Ethnic (meet at least 1)	I / L / D (meet at least 2)
Alex Green	X	✓
Cumberland	X	✓
Haynes	X	✓

Suggested Building Reuse: Joelton Middle is geographically isolated and may not be useful to MNPS other than as a school. Suggested reuses could include office space for central office staff or a school bus parking facility. MNPS could also consider converting Joelton Middle into a K-8 school in the future. Joelton Middle could also be considered for some other community use. MNPS could consider tearing down the Lillard building, retaining ownership, and asking parks to maintain the property as a community park until a time in the future when the property might be needed for a school location again. Possible reuses for Lillard Elementary include office space for central office staff, classroom/training space for the security department, or other community use.

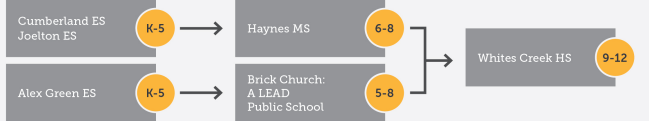
Capital Construction Budget Implications: Joelton was fully renovated in 2014. Joelton Elementary was constructed in 1989 and has an FCI of 80.69. Joelton Elementary is in the 10-year plan for a full renovation totaling \$18,830,000. A budget of \$1.2M could possibly be required to convert Joelton MS to a K-5 with a capacity of 441. A budget of \$6M will be required to convert Joelton MS to a K-8 with a capacity of 598.

Transportation Implications: One additional bus would be required to transport students from the Joelton MS Parent Responsibility Zone to Haynes.

Cost Summary:

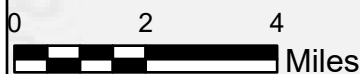
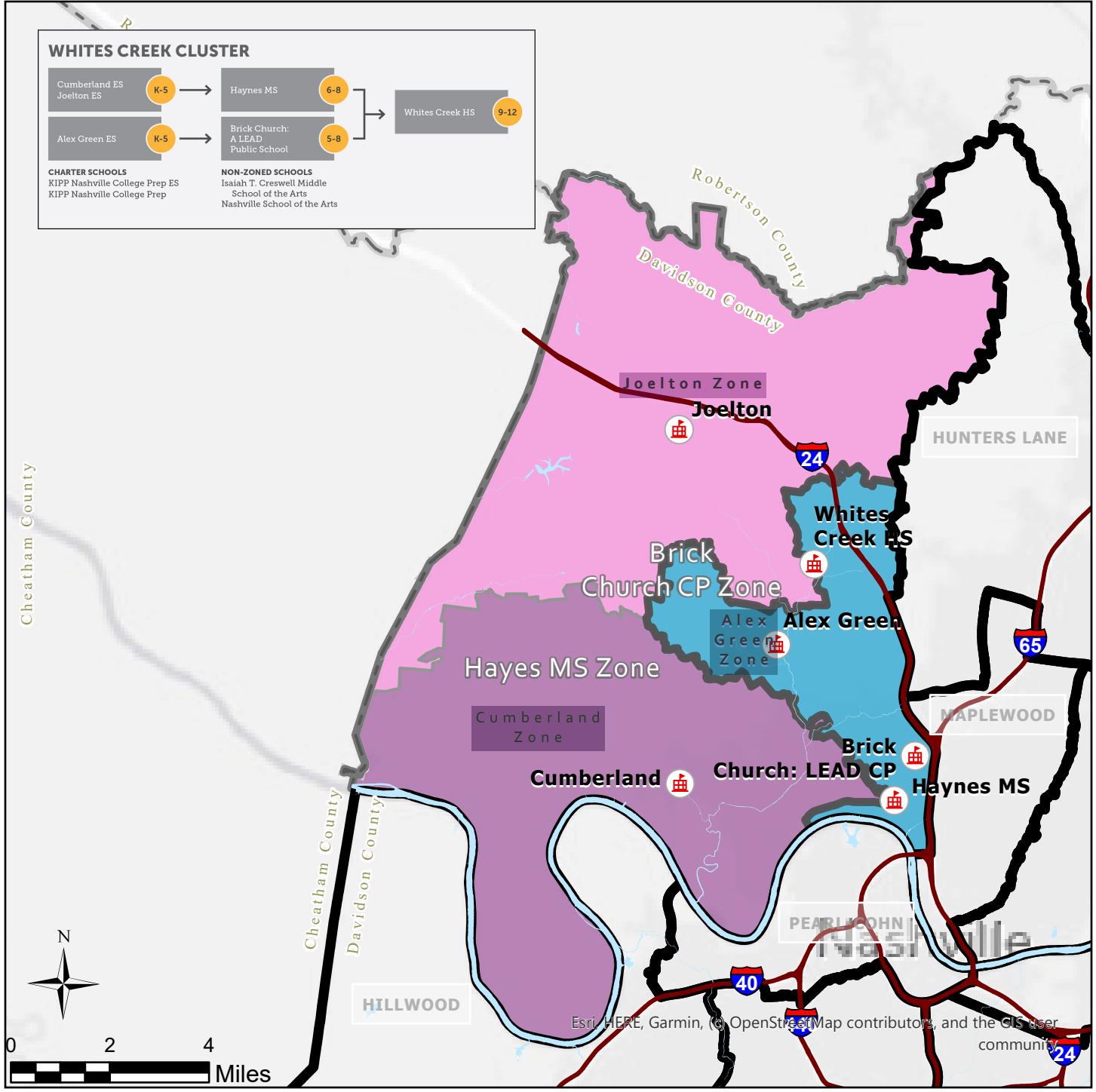
- Summary of Potential Cost Savings
 - \$1,413,000 per year in school based budget.
 - \$123,000 per year in utility costs at Lillard.
 - \$90,065 per year in janitorial services at Lillard.
 - \$7805 per year in grounds upkeep at Lillard.
 - \$240,000 per year in utility costs at Joelton MS.
 - \$126,883 per year in janitorial services at Joelton MS.
 - Total utility, grounds, and janitorial savings only achieved by relinquishing the property. Partial saving possible through change in use.
- Summary of Potential Cost
 - \$73,500 a year for additional school bus route.
 - \$70,000 estimated one time moving expenses.
 - \$225,000 to repaint Haynes.
 - \$165,000 to repaint Alex Green.
 - \$189,000 to repaint Cumberland.
 - \$12,000 for updated signage if the school name was changed.
 - \$2,500 for rebranding and website update if the school name was changed

WHITES CREEK CLUSTER



CHARTER SCHOOLS
KIPP Nashville College Prep ES
KIPP Nashville College Prep

NON-ZONED SCHOOLS
Isaiah T. Cresswell Middle
School of the Arts
Nashville School of the Arts



Whites Creek Cluster

Print Date: 4/17/2020



Proposed 2020-21 SY

- Zone Schools
- Lake/River
- Cluster Boundary
- Middle School Zone
- Elementary Zone**
- Alex Green
- Cumberland
- Joelton
- Interstate

The geographic data layers and information were produced by MNPS Student Assignment Services are provided as a public resource. Metro Schools makes no warranties, expressed or implied concerning the accuracy, completeness or suitability of this data, and it should not be construed or used as a legal description. Every reasonable effort is made to ensure the accuracy and completeness of the data.



School Consolidation Study:

Whites Creek Cluster

Board Meeting
May 12, 2020

Current Information for Alex Green Elementary School

Program: Alex Green does not offer unique programming and is an enhanced option school. Six (6) students participate in the Encore program and 10 fourth graders participated in Young Scholars of Nashville Program (YSN) to nurture the talents of students who have not yet qualified for gifted and talented services but are still in need of challenging learning experiences. The Advanced Academics Resource Teacher (AART) collaborates with the general education teachers to extend learning opportunities for students in Tier I and enrichment.

Priority KPIs: Achievement, Attendance, Suspensions

School	2019 TNReady Achievement Results					2019 Tennessee Value Added Assessment Results				
	% of Students On Track or Mastered			EL/A & Math Proficiency Rate	2-year EL/A & Math Proficiency Rate Average	School-Wide Growth Composites				
	English/LA	Math	Soc St			Composite	EOC	Numeracy	Literacy	Soc St
Alex Green ES	11.6%	16.1%		12.9%	12.5%	3		4	2	
MNPS	25.9%	29.9%	27.7%	27.9%	26.9%	3	1	5	5	1

School	2019-20 MAP Reading Results							
	Median National Percentile (NP)		% of Students Above Average (Quintiles 4-5)			Academic Growth from Aug 2019 to Feb 2020		
	Aug 2019 Baseline	Feb 2020	Aug 2019 Baseline	Feb 2020 Target	Feb 2020 Results	Increase in % Q4-Q5	Growth Median NP	% Met Growth Target
Alex Green ES	20	24	16.5%	21.5%	15.1%	-1.4%	37	41.2%
MNPS	40	41	32.5%	36.7%	32.7%	0.1%	50	52.1%

School	2019-20 MAP Mathematics Results							
	Median National Percentile (NP)		% of Students Above Average (Quintiles 4-5)			Academic Growth from Aug 2019 to Feb 2020		
	Aug 2019 Baseline	Feb 2020	Aug 2019 Baseline	Feb 2020 Target	Feb 2020 Results	Increase in % Q4-Q5	Growth Median NP	% Met Growth Target
Alex Green ES	22	24	10.2%	15.2%	17.6%	7.4%	51	55.6%
MNPS	34	35	26.0%	30.6%	26.7%	0.7%	53	55.5%

School	2019-20% of Students with Satisfactory (95% or Above) Average Daily Attendance			
	2018-19 Baseline	2019-20 Target	2019-20 Result*	2018-19 Increase
Alex Green ES	54.7%	56.1%	50.6%	-4.0%
MNPS	56.2%	57.5%	60.4%	2.9%

* Through March 11, 2020

School	2019-20 % of Students with Out-of-School Suspension			
	2018-19 Baseline	2019-20 Target	2019-20 Result*	2019-20 Reduction
Alex Green ES	0.6%	0.0%	0.0%	-0.6%
MNPS	9.26%	6.6%	7.2%	-2.11%

* Through March 11, 2020

Current Information for Alex Green Elementary School

Building Data:

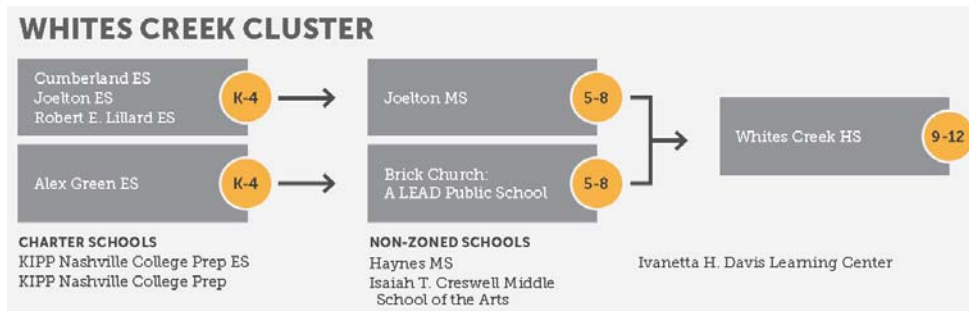
School	Building Area	Campus Size	Condition	Suitability	Technology	Site	Facility Condition Index
Alex Green	59,716 SF	10.29 acres	87.2	78.2	84.2	76.4	83.70

Construction History: Alex Green Elementary was built in 1987 and received an addition in 2003.

Enrollment and Utilization Data:

School	Oct 16/17	Oct 17/18	Oct 18/19	Oct 19/20	20/21 Projection	24/25 Projection	29/30 Projection	Capacity	Current Utilization	24/25 Utilization
Alex Green	306	304	261	241	244	237	239	349	69.9%	67.9%

Feeder Pattern:



Demographic Data:

School	Asian		Black or African American		Hispanic or Latino		White		American Indian or Alaska Nat		Other		Income (ED/FRL)		Language (ELL)		Disability (SWD)		Total Students	Race/Ethnic (meet at least 1)	I / L / D (meet at least 2)
Alex Green	0	0%	188	78%	31	13%	22	9%	0	0%	0	0%	152	63%	24	10%	24	10%	241	X	✓

School Based Budget (yearly figures):

School	FTEs	Total Allocation	Supplemental Funding	Per Pupil Allocation	MNPS Average Per Pupil Allocation
Alex Green	22.15	\$2,300,970	\$472,020	\$8,606	\$7,046

* Supplemental Funding is provide to small schools to ensure they can offer the full education experience and meet state and district staffing requirements. If a school does not earn enough funding through the School Base Budget Model to meet these requirements, supplemental funding is added to bring them up to this baseline level.



School Consolidation Study:

Whites Creek Cluster

Board Meeting
May 12, 2020

Current Information for Cumberland Elementary School

Program: Cumberland does not offer any unique programming. Three (3) students participate in the Encore program and has 11 fourth grade students participating in the Young Scholars of Nashville Program (YSN). In addition, the AART collaborates with the general education teachers to extend learning opportunities for students in Tier I and enrichment.

Priority KPIs: Achievement, Attendance, Suspensions

School	2019 TNReady Achievement Results					2019 Tennessee Value Added Assessment Results				
	% of Students On Track or Mastered			EL/A & Math Proficiency Rate	2-year EL/A & Math Proficiency Rate Average	School-Wide Growth Composites				
	English/LA	Math	Soc St			Composite	EOC	Numeracy	Literacy	Soc St
Cumberland ES	7.0%	5.3%		7.5%	4.2%	5		5	5	
MNPS	25.9%	29.9%	27.7%	27.9%	26.9%	3	1	5	5	1

School	2019-20 MAP Reading Results							
	Median National Percentile (NP)		% of Students Above Average (Quintiles 4-5)			Academic Growth from Aug 2019 to Feb 2020		
	Aug 2019 Baseline	Feb 2020	Aug 2019 Baseline	Feb 2020 Target	Feb 2020 Results	Increase in % Q4-Q5	Growth Median NP	% Met Growth Target
Cumberland ES	27	26	17.7%	22.7%	17.6%	-.1%	42	46.2%
MNPS	40	41	32.5%	36.7%	32.7%	0.1%	50	52.1%

School	2019-20 MAP Mathematics Results							
	Median National Percentile (NP)		% of Students Above Average (Quintiles 4-5)			Academic Growth from Aug 2019 to Feb 2020		
	Aug 2019 Baseline	Feb 2020	Aug 2019 Baseline	Feb 2020 Target	Feb 2020 Results	Increase in % Q4-Q5	Growth Median NP	% Met Growth Target
Cumberland ES	24	24	9.7%	14.7%	13.5%	3.8%	44	49.7%
MNPS	34	35	26.0%	30.6%	26.7%	0.7%	53	55.5%

School	2019-20% of Students with Satisfactory (95% or Above) Average Daily Attendance			
	2018-19 Baseline	2019-20 Target	2019-20 Result*	2018-19 Increase
Cumberland ES	39.4%	41.2%	44.3%	4.9%
MNPS	56.2%	57.5%	60.4%	2.9%

* Through March 11, 2020

School	2019-20 % of Students with Out-of-School Suspension			
	2018-19 Baseline	2019-20 Target	2019-20 Result*	2019-20 Reduction
Cumberland ES	1.2%	0.0%	0.5%	-0.7%
MNPS	9.26%	6.6%	7.2%	-2.11%

* Through March 11, 2020

Current Information for Cumberland Elementary School

Building Data:

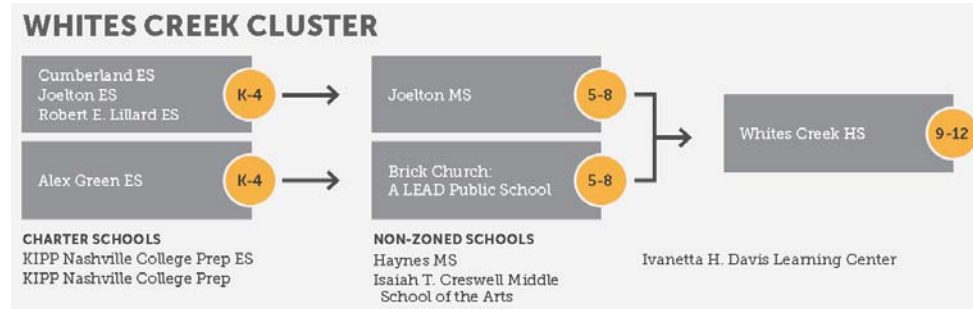
School	Building Area	Campus Size	Condition	Suitability	Technology	Site	Facility Condition Index
Cumberland	68,430 SF	10.67 acres	81.1	71.3	86.7	74.3	78.35

Construction History: Cumberland Elementary was built in 1998.

Enrollment and Utilization Data:

School	Oct 16/17	Oct 17/18	Oct 18/19	Oct 19/20	20/21 Projection	24/25 Projection	29/30 Projection	Capacity	Current Utilization	24/25 Utilization
Cumberland	452	354	276	268	270	276	277	496	54.4%	55.6%

Feeder Pattern:



Demographic Data:

School	Asian		Black or African American		Hispanic or Latino		White		American Indian or Alaska Nat		Other		Income (ED/FRL)		Language (ELL)		Disability (SWD)		Total Students	Race/Ethnic (meet at least 1)	I / L / D (meet at least 2)
	Count	%	Count	%	Count	%	Count	%	Count	%	Count	%	Count	%	Count	%	Count	%			
Cumberland	0	0%	208	77%	33	11%	27	10%	2	1%	0	0%	211	78%	11	4%	38	14%	270	X	✓

School Based Budget (yearly figures):

School	FTEs	Total Allocation	Supplemental Funding	Per Pupil Allocation	MNPS Average Per Pupil Allocation
Cumberland	31.2	\$2,300,970	\$472,020	\$8,606	\$7,046

* Supplemental Funding is provide to small schools to ensure they can offer the full education experience and meet state and district staffing requirements. If a school does not earn enough funding through the School Base Budget Model to meet these requirements, supplemental funding is added to bring them up to this baseline level.



School Consolidation Study:

Whites Creek Cluster

Board Meeting
May 12, 2020

Current Information for Robert E. Lillard Elementary School

Program: Lillard does not offer any unique programming. One (1) student participates in the Encore program and 25 students participate in the Young Scholars of Nashville Program (YSN). The AART also collaborates with the general education teachers to extend learning opportunities for students in Tier I and enrichment.

Priority KPIs: Achievement, Attendance, Suspensions

School	2019 TNReady Achievement Results					2019 Tennessee Value Added Assessment Results				
	% of Students On Track or Mastered			EL/A & Math Proficiency Rate	2-year EL/A & Math Proficiency Rate Average	School-Wide Growth Composites				
	English/LA	Math	Soc St			Composite	EOC	Numeracy	Literacy	Soc St
Lillard ES	13.8%	19.0%		13.8%	15.0%	3		4	3	
MNPS	25.9%	29.9%	27.7%	27.9%	26.9%	3	1	5	5	1

School	2019-20 MAP Reading Results							
	Median National Percentile (NP)		% of Students Above Average (Quintiles 4-5)			Academic Growth from Aug 2019 to Feb 2020		
	Aug 2019 Baseline	Feb 2020	Aug 2019 Baseline	Feb 2020 Target	Feb 2020 Results	Increase in % Q4-Q5	Growth Median NP	% Met Growth Target
Lillard ES	26	20	17.0%	22.0%	14.8%	-2.2%	29	42.6%
MNPS	40	41	32.5%	36.7%	32.7%	0.1%	50	52.1%

School	2019-20 MAP Mathematics Results							
	Median National Percentile (NP)		% of Students Above Average (Quintiles 4-5)			Academic Growth from Aug 2019 to Feb 2020		
	Aug 2019 Baseline	Feb 2020	Aug 2019 Baseline	Feb 2020 Target	Feb 2020 Results	Increase in % Q4-Q5	Growth Median NP	% Met Growth Target
Lillard ES	19	13	10.4%	15.4%	7.7%	-2.7%	28	28.1%
MNPS	34	35	26.0%	30.6%	26.7%	0.7%	53	55.5%

School	2019-20% of Students with Satisfactory (95% or Above) Average Daily Attendance			
	2018-19 Baseline	2019-20 Target	2019-20 Result*	2018-19 Increase
Lillard ES	46.2%	47.8%	48.9%	2.7%
MNPS	56.2%	57.5%	60.4%	2.9%

* Through March 11, 2020

School	2019-20 % of Students with Out-of-School Suspension			
	2018-19 Baseline	2019-20 Target	2019-20 Result*	2019-20 Reduction
Lillard ES	2.4%	0.0%	1.0%	-1.4%
MNPS	9.26%	6.6%	7.2%	-2.11%

* Through March 11, 2020

Current Information for Robert E. Lillard Elementary School

Building Data:

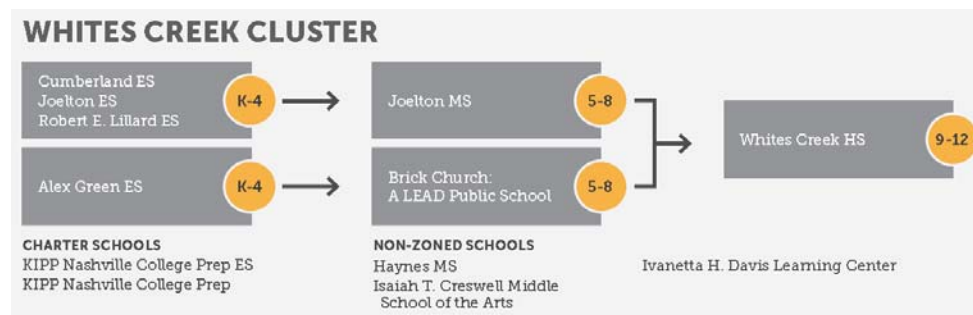
School	Building Area	Campus Size	Condition	Suitability	Technology	Site	Facility Condition Index
Lillard	62,982 SF	11.50 acres	61.6	69.2	86.7	52.2	63.94

Construction History: Robert E. Lillard Elementary was built in 1961 with an addition in 1968. It received another addition in 1975, a renovation in 2002 and a playroom addition in 2007. Lillard is in year 2 of the current Capital Improvement Budget for a \$19.74M renovation.

Enrollment and Utilization Data:

School	Oct 16/17	Oct 17/18	Oct 18/19	Oct 19/20	20/21 Projection	24/25 Projection	29/30 Projection	Capacity	Current Utilization	24/25 Utilization
Lillard	334	298	268	224	213	250	253	529	40.3%	47.3%

Feeder Pattern:



Demographic Data:

School	Asian		Black or African American		Hispanic or Latino		White		American Indian or Alaska Nat		Other		Income (ED/FRL)		Language (ELL)		Disability (SWD)		Total Students	Race/Ethnic (meet at least 1)	I / L / D (meet at least 2)
Lillard	0	0%	220	95%	7	3%	4	2%	0	0%	0	0%	162	70%	5	2%	35	15%	231	X	✓

School Based Budget (yearly figures):

School	FTEs	Total Allocation	Supplemental Funding	Per Pupil Allocation	MNPS Average Per Pupil Allocation
Lillard	25.7	\$1,947,049	\$457,986	\$9,163	\$7,046

* Supplemental Funding is provide to small schools to ensure they can offer the full education experience and meet state and district staffing requirements. If a school does not earn enough funding through the School Base Budget Model to meet these requirements, supplemental funding is added to bring them up to this baseline level.



School Consolidation Study:

Whites Creek Cluster

Board Meeting
May 12, 2020

Current Information for Haynes Middle Health/Medical Science Design Center

Program: Haynes Middle is a Health/Medical Science Paideia Design Center and is a Phase I STEAM school but has no academic programming to set it apart as a Paideia school. The school has one community partner –Meharry Medical College. The school has a great lab space that could easily be turned into the Haynes Medical Lab to expand their already existing Medical Monday’s program, when all teachers and staff wear scrubs and invite healthcare partners to serve as guest speakers for the students. Donna Gilley, in the Office of School Choice, is currently working with healthcare businesses and community partners to secure equipment and supplies for the Haynes Medical Lab that will provide an authentic space for the Medical Monday’s guest speakers. Additionally, Whites Creek, the feeder academy high school, is partnering with Haynes to connect students to opportunities in grades 9-12. Haynes has five (5) students in Encore and five (5) YSN students. The AARTs at Haynes and IT Creswell are collaborating with the Cambridge coordinator at Whites Creek to form a partnership and support the academic risk-taking of joining the Cambridge program at the high school.

Priority KPIs: Achievement, Attendance, Suspensions

School	2019 TNReady Achievement Results					2019 Tennessee Value Added Assessment Results				
	% of Students On Track or Mastered			EL/A & Math Proficiency Rate	2-year EL/A & Math Proficiency Rate Average	School-Wide Growth Composites				
	English/LA	Math	Soc St			Composite	EOC	Numeracy	Literacy	Soc St
Haynes MS	1.7%	7.2%	1.7%	3.3%	5.6%	3		5	3	1
MNPS	25.9%	29.9%	27.7%	27.9%	26.9%	3	1	5	5	1

School	2019-20 MAP Reading Results							
	Median National Percentile (NP)		% of Students Above Average (Quintiles 4-5)			Academic Growth from Aug 2019 to Feb 2020		
	Aug 2019 Baseline	Feb 2020	Aug 2019 Baseline	Feb 2020 Target	Feb 2020 Results	Increase in % Q4-Q5	Growth Median NP	% Met Growth Target
Haynes MS	19	12	7.5%	12.5%	6.2%	-1.3%	26	35.4%
MNPS	40	41	32.5%	36.7%	32.7%	0.1%	50	52.1%

School	2019-20 MAP Mathematics Results							
	Median National Percentile (NP)		% of Students Above Average (Quintiles 4-5)			Academic Growth from Aug 2019 to Feb 2020		
	Aug 2019 Baseline	Feb 2020	Aug 2019 Baseline	Feb 2020 Target	Feb 2020 Results	Increase in % Q4-Q5	Growth Median NP	% Met Growth Target
Haynes MS	16	17	4.6%	9.6%	5.7%	-3.9%	56	55.7%
MNPS	34	35	26.0%	30.6%	26.7%	0.7%	53	55.5%

School	2019-20% of Students with Satisfactory (95% or Above) Average Daily Attendance			
	2018-19 Baseline	2019-20 Target	2019-20 Result*	2018-19 Increase
Haynes MS	54.7%	56.1%	48.1%	-6.6%
MNPS	56.2%	57.5%	60.4%	2.9%

* Through March 11, 2020

School	2019-20 % of Students with Out-of-School Suspension			
	2018-19 Baseline	2019-20 Target	2019-20 Result*	2019-20 Reduction
Haynes MS	33.6%	31.6%	13.1%	-20.5%
MNPS	9.26%	6.6%	7.2%	-2.11%

* Through March 11, 2020

Current Information for Haynes Middle Health/Medical Science Design Center

Building Data:

School	Building Area	Campus Size	Condition	Suitability	Technology	Site	Facility Condition Index
Haynes	81,092 SF	15.52 acres	84.7	77.8	80.0	82.0	82.31

Construction History: Haynes Middle opened in 2003. It has received no significant construction since its opening.

Enrollment and Utilization Data:

School	Oct 16/17	Oct 17/18	Oct 18/19	Oct 19/20	20/21 Projection	24/25 Projection	29/30 Projection	Capacity	Current Utilization	24/25 Utilization
Haynes	283	253	251	217	210	250	250	517	40.6%	48.4%

Feeder Pattern: Haynes has no zone. Students who attend Haynes live in the following zones:

School - Current Enrollment (Current Utilization) – *Number of Students currently attending Haynes*

- Joelton MS - 267 (55.3%) – 102
- Brick Church CP - 322 (39.1%) – 55
- Jere Baxter MS - 566 (75.2%) – 28
- John Early MS - 274 (49.7%) – 9
- Madison MS - 609 (66.8%) – 7
- Other – 16

Demographic Data:

School	Asian		Black or African American		Hispanic or Latino		White		American Indian or Alaska Nat		Other		Income (ED/FRL)		Language (ELL)		Disability (SWD)		Total Students	Race/Ethnic (meet at least 1)	I / L / D (meet at least 2)
Haynes	0	0%	211	97%	0	0%	7	3%	0	0%	0	0%	161	74%	0	0%	46	21%	218	X	✓

School Based Budget (yearly figures):

School	FTEs	Total Allocation	Supplemental Funding	Per Pupil Allocation	MNPS Average Per Pupil Allocation
Haynes	25.5	!1,968,909	\$437,611	\$9,376	\$7,046

* Supplemental Funding is provide to small schools to ensure they can offer the full education experience and meet state and district staffing requirements. If a school does not earn enough funding through the School Base Budget Model to meet these requirements, supplemental funding is added to bring them up to this baseline level.



School Consolidation Study:

Whites Creek Cluster

Board Meeting
May 12, 2020

Current Information for Joelton Middle School

Program: Joelton Middle has no unique academic programming but does have two (2) students participating in the Encore and 24 students participating in YSN programs.

Priority KPIs: Achievement, Attendance, Suspensions

School	2019 TNReady Achievement Results					2019 Tennessee Value Added Assessment Results				
	% of Students On Track or Mastered			EL/A & Math Proficiency Rate	2-year EL/A & Math Proficiency Rate Average	School-Wide Growth Composites				
	English/LA	Math	Soc St			Composite	EOC	Numeracy	Literacy	Soc St
Joelton MS	4.4%	5.8%	2.7%	5.0%	4.1%	1		5	1	1
MNPS	25.9%	29.9%	27.7%	27.9%	26.9%	3	1	5	5	1

School	2019-20 MAP Reading Results							
	Median National Percentile (NP)		% of Students Above Average (Quintiles 4-5)			Academic Growth from Aug 2019 to Feb 2020		
	Aug 2019 Baseline	Feb 2020	Aug 2019 Baseline	Feb 2020 Target	Feb 2020 Results	Increase in % Q4-Q5	Growth Median NP	% Met Growth Target
Joelton MS	22	16	9.8%	14.8%	8.6%	-1.2%	26	33.8%
MNPS	40	41	32.5%	36.7%	32.7%	0.1%	50	52.1%

School	2019-20 MAP Mathematics Results							
	Median National Percentile (NP)		% of Students Above Average (Quintiles 4-5)			Academic Growth from Aug 2019 to Feb 2020		
	Aug 2019 Baseline	Feb 2020	Aug 2019 Baseline	Feb 2020 Target	Feb 2020 Results	Increase in % Q4-Q5	Growth Median NP	% Met Growth Target
Joelton MS	12	13	3.7%	8.7%	5.8%	2.1%	42	43.9%
MNPS	34	35	26.0%	30.6%	26.7%	0.7%	53	55.5%

School	2019-20% of Students with Satisfactory (95% or Above) Average Daily Attendance			
	2018-19 Baseline	2019-20 Target	2019-20 Result*	2018-19 Increase
Joelton MS	39.5%	41.3%	56.3%	16.8%
MNPS	56.2%	57.5%	60.4%	2.9%

* Through March 11, 2020

School	2019-20 % of Students with Out-of-School Suspension			
	2018-19 Baseline	2019-20 Target	2019-20 Result*	2019-20 Reduction
Joelton MS	25.5%	23.3%	20.6%	-4.9%
MNPS	9.26%	6.6%	7.2%	-2.11%

* Through March 11, 2020

Current Information for Joelton Middle School

Building Data:

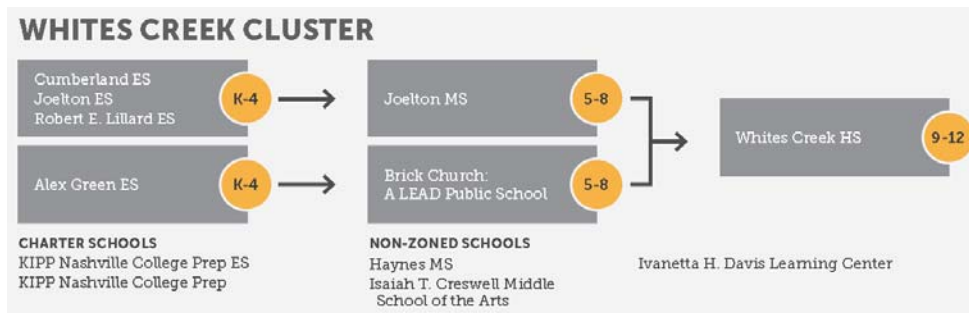
School	Building Area	Campus Size	Condition	Suitability	Technology	Site	Facility Condition Index
Joelton	82,274 SF	29.30 acres	82.1	77.1	100.0	89.3	84.31

Construction History: Joelton Middle was constructed into 1950. It received a full facility renovation, completed in 2014 at a cost of \$8.4M.

Enrollment and Utilization Data:

School	Oct 16/17	Oct 17/18	Oct 18/19	Oct 19/20	20/21 Projection	24/25 Projection	29/30 Projection	Capacity	Current Utilization	5 yr Utilization
Joelton	343	330	324	293	267	294	324	483	55.3%	60.9%

Feeder Pattern:



Demographic Data:

School	Asian		Black or African American		Hispanic or Latino		White		American Indian or Alaska Nat		Other		Income (ED/FRL)		Language (ELL)		Disability (SWD)		Total Students	Race/Ethnic (meet at least 1)	I / L / D (meet at least 2)
	Count	%	Count	%	Count	%	Count	%	Count	%	Count	%	Count	%	Count	%					
Joelton	0	0%	208	69%	24	8%	66	22%	0	0%	0	0%	208	69%	9	3%	57	19%	301	X	✓

School Based Budget (yearly figures):

School	FTEs	Total Allocation	Supplemental Funding	Per Pupil Allocation	MNPS Average Per Pupil Allocation
Joelton	27.2	\$2,071,003	\$210,999	\$7,823	\$7,046

* Supplemental Funding is provide to small schools to ensure they can offer the full education experience and meet state and district staffing requirements. If a school does not earn enough funding through the School Base Budget Model to meet these requirements, supplemental funding is added to bring them up to this baseline level.